

# COVID-19 FACT SHEET

## RISK OF CONTRACTING COVID-19

Everyone is at risk. Some are at greater risk of severe cases.

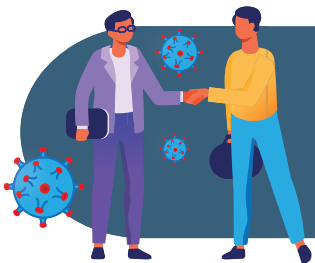
- Age of 65 or over
- Compromised immune systems
- Underlying medical conditions

## HOW DOES COVID-19 SPREAD?

Human coronaviruses cause infections of the nose, throat and lungs.

### Spread of COVID-19 occurs through:

- Respiratory droplets from coughing or sneezing.
- Close, prolonged personal contact, such as touching or shaking hands.
- Touching a contaminated item and then touching your mouth, nose or eyes before washing your hands.



Evidence suggests that person-to-person spread is efficient at close contact.

## HYGIENE

Proper hygiene can help reduce the risk of infection or spreading it to others.

Cough or sneeze into a tissue or the bend of your arm, not your hand. Dispose of any tissues you have used as soon as possible in a lined waste basket and wash your hands afterwards.

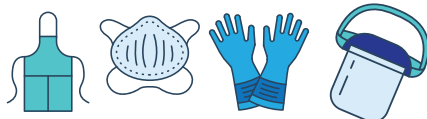
Wash your hands often with soap and water for at least 20 seconds. Use alcohol-based hand sanitizer if soap and water are not available

Avoid touching your eyes, nose or mouth with unwashed hands.

Clean high-touch surfaces with disinfectant cleaners.

Phones • Tables  
Door Handles  
Electronics  
Computer  
Keyboard & Mouse

## PPE



If you are a healthy individual, the use of a mask is not recommended for preventing the spread of COVID-19.

Wearing a mask when you are not ill may give a false sense of security. There is a potential risk of infection with improper mask use and disposal. They also need to be changed frequently.

However, your health care provider may recommend you wear a mask if you are experiencing symptoms of COVID-19 while you are seeking or waiting for care.

## ACCESSING THE SHOREHAM PROPERTY

- Always have your Shoreham staff ID available to show at all entrances. Whether you just went out for a short period of time, you will need to show your ID card to get back into the facility.
- ID must be worn in such a manner that people are easily identified. If your ID is broken, lost, etc, notify Security or your supervisor.

